

A Masterpiece
of its own



 **resection
master**

Resectoscopy System with automatic
chip aspiration for a permanent view



Resectoscopy System with automatic chip aspiration for a permanent view

The **RESECTION MASTER** ensures continuous visualization and allows concentration entirely on the resection procedure.

It is no longer necessary to exchange instrumentation repeatedly for manual chip removal – the **RESECTION MASTER** system performs this automatically and immediately with the integrated chip aspiration function.

The **RESECTION MASTER** from Richard Wolf:
A Masterpiece of its own



A masterpiece down to the last detail: The **RESECTION MASTER** Resectoscope

- **Large, separate channel**
for chip aspiration
- **Hybrid technology**
permits monopolar and bipolar application
- **Suction shutoff**
easy suction deactivation by lever on the resectoscope
- **27 Fr. outer sheath**
reduces the insertion resistance
- **Ceramic insulation rounded at the distal end**
for atraumatic insertion
- **E-line snap-on connector system**
for simple assembly and disassembly



Master difficult situations with ease

When a myoma resection is carried out, the chips from the resection float in the dilatation medium and make a clear view of the uterine cavity increasingly difficult. This increases the risk of perforation as the treatment proceeds.

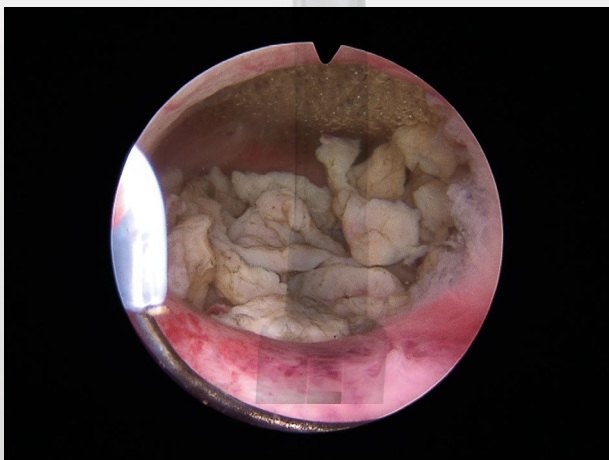
Repeated interruptions of the resection are required for the necessary recovery of tissue chips. This significantly extends operating times and can lead to the so-called "TUR Syndrome". Insertion of the resectoscope after each curettage always entails the risk of a perforation.

The RESECTION MASTER

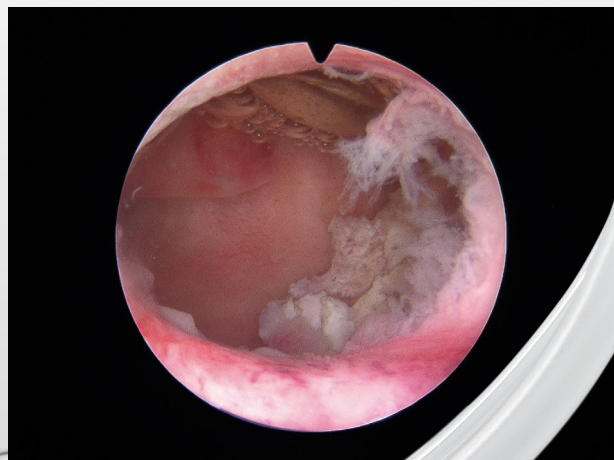
eliminates the problems of chip recovery and its associated risks. The **RESECTION MASTER** uses a short pulse to automatically suck up the tissue chips immediately without significantly impairing the hydrometra.

This permits a permanent view, increasing overall safety throughout the entire procedure.

Repeated interruptions of the resection are also eliminated, making it a much easier procedure for the surgeon to perform.



Resection with a conventional resectoscope:
Tissue chips floating in the dilatation medium make clear view increasingly difficult in the uterine cavity.



Resection with the RESECTION MASTER:
Continuous unrestricted view of the operating area – for safer, faster and more relaxed working conditions.



**The centerpiece of mastery:
The RESECTION MASTER PUMP**

- **Extremely short suction pulse**
adjustable in three stages
- **Separate collection container**
Tissue chips and secretion
are automatically separated




The **RESECTION MASTER PUMP** is a highly effective pump unit with innovative pulse suction which permits automatic chip aspiration in the system with the **RESECTION MASTER Resectoscope**. Extremely short suction pulses keep the loss of liquid to a minimum, effectively preventing the collapse of the cavity.



Resectoscopy System with automatic chip aspiration for a permanent view

RESECTION MASTER Resectoscope	
PANOVIEW telescope ø 3.3 mm, 30° direction of view.....	8656.422
Continuous-irrigation outer sheath round, "E-line" 27 Fr., distal straight	8659.071
Obturator 27 Fr.....	8659.175
Working element monopolar / bipolar "E-line", passive cutting, closed handle with integrated pulse generator for suction in the channel, with distal ceramic insulation	8659.2351
for this:	
Fiber light cable 2.5 mm 2.3 m set	806625231

For reprocessing	
Sterilization protection sleeve for electrodes.....	8428.901
RIWO System Tray for accommodating the complete instrument set.....	38201.486

RESECTION MASTER PUMP	
RESECTION MASTER PUMP Set comprising: RESECTION MASTER PUMP (2228.001), bottle holders (64030.125 and 64031.381), sterile tube set (4170.2228 / pack of 10), filter for vacuum connection (2228.901 / disposable article, pack of 10), sterile filter for control connection (2221.901 / pack of 10.), collecting container 250 ml for tissue chips (2228.801), with tube insert (2228.802), secretion bottle 2000 ml, autoclavable (8170.6551) with lid (8170.6552), sound absorber (35100.115 /3 St.), connection tube (8170.6554) and power cable (2440.03)	22280011
Sterile tube set for single use on the Resection Master Pump 2228 comprising: Control tube, irrigation tube with non-return valve, chip aspiration tube with non-return valve and pump tube (pack of 10, packed singly, sterile)	4170.2228

Reusable electrodes		Types
 Cutting electrode	monopolar, loop 0.3 mm, reusable, pack of 1	8659.161
 Vaporization electrode	monopolar, barrel-shaped, reusable, pack of 1	8659.162
 Hook electrode	monopolar and bipolar, reusable, pack of 1	8659163

Disposable electrodes		Types
 Cutting electrode	bipolar, loop 0.25 mm, packed singly, sterile, pack of 3	4659.1613
 Coagulation electrode	bipolar, barrel-shaped, packed singly, sterile, pack of 3	4659.1623

For HF cable see main catalog.

Specifications subject to change without notice.

E 629/IX. 15 en.2