

Quality with every fiber



Fiber light cables

Fiber light cable





Quality with every fiber

Richard Wolf light cables. Illuminating features facilitate streamlined handling, efficient organization, and retention of asset value.



"Snap-on" connector

- High-performance fiberglass materials made in Germany
- Fast "snap-on" precision connection between endoscope and light cable
- Designed for a large number of usage cycles with steel anti-kink protection
- Know don't guess. Standardised color code for light cable and endoscope
- Can be coordinated with color ID rings on the light source-end to match trays etc.
- Appropriate adapters make the light cable compatible with light sources and endoscopes from different manufacturers

	ø 1,6 mm
	ø 2,5 mm
	ø 3,5 mm
	ø 5,0 mm

Innovatives Farbkodiersystem

Color coded for quick matching

The innovative color coding system from RICHARD WOLF allows the quick and accurate matching of the correct diameter light cable with the endoscope. This unique form of identification avoids errors in matching up components. The color ring indicates at a glance whether the fiber-bundle diameter of the light cable matches that of the endoscope.



Coordinate with identification rings

Flexible coordination. A system of colored ID rings that can be easily fitted to the projector end cable connector. This means the light cables can be quickly identified, for example as belonging to a specific tray, set, department or hospital.

8 different colors are available – black is the color supplied as standard.

Identification rings	Color	Order number
Color rings for light cables (pack of 10) Color rings for identification of the light cables at the plug (light source end).	Black	809520
	Red	809521
	Blue	809522
	Green	809523
	Yellow	809524
	Orange	809525
	Violet	809526
	White	809527

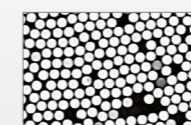


Example 809521

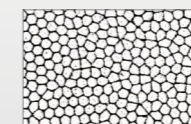
fusion

More light through Fusion

High-power light sources need Fusion. The fused glass fibers on the light-source end provides maximum temperature resistance and 20% more light transmission. Fusion light cables are a particularly beneficial investment and meet the highest standards for endoscopic illumination.

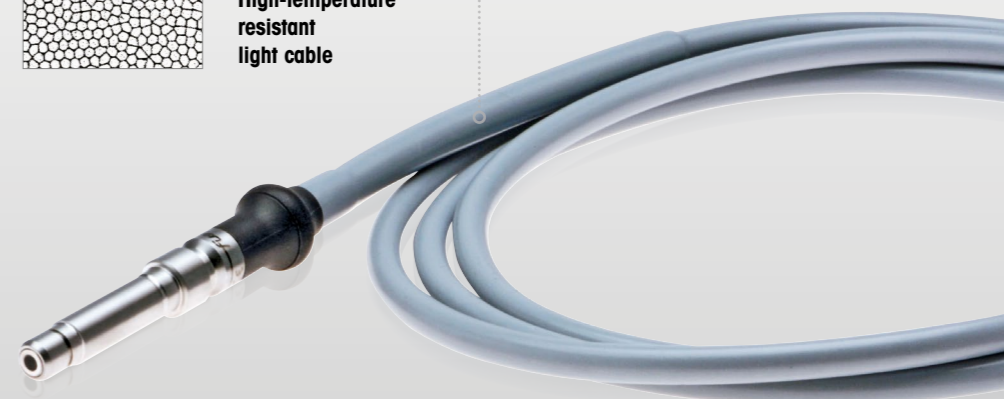


Standard light cable with adhesive filler








fusion
High-temperature resistant light cable

Anti-kink protection under the protective sheath for optimum hygienic characteristics





Overview of the range

Light Cables in new design



Fiber Light Cable Set	Color identification, endoscope-side	Ø Fiber bundle and color code	Length	Order number	Order number without adapter
 <p>Set bestehend aus: Fiber Lichtleiter, Adapter projektorseitig (8095.07) und Adapter endoskopseitig (809509)</p> <p>* Die Lichtleiter können auch ohne Adapter bestellt werden. Adapter zum Anschluss an Fremdprodukte bieten wir separat an (siehe unten).</p>		1,6 mm	1,8 m	806616181	80661618*
			2,3 m	806616231	80661623*
			3,0 m	806616301	80661630*
		2,5 mm	1,8 m	806625181	80662518*
			2,3 m	806625231	80662523*
			3,0 m	806625301	80662530*
		3,5 mm	1,8 m	806635181	80663518*
			2,3 m	806635231	80663523*
			3,0 m	806635301	80663530*
		5,0 mm	3,5 m	806635351	80663535*
			2,3 m	806650231	80665023*
			3,0 m	806650301	80665030*
			3,5 m	806650351	80665035*

Fused *fusion* light cables, resistant to high temperatures

fusion Light Cable Set	Color identification, endoscope-side	Ø Fiber bundle and color code	Length	Order number	Order number without adapter
 <p>Set comprises: Fiber Light Cable, adapter projector-light source-end (8095.07) and adapter endoscope-end (809509)</p> <p>*The <i>fusion</i> light cables can also be ordered without adapters and they are compatible with the same adapters.</p>		5,0 mm	2,3 m	806550231	80655023*
			3,0 m	806550301	80655030*
			3,5 m	806550351	80655035*

Adapters for light cables

for connection to **light sources**
from the following manufacturers:

Wolf, Stryker..... 8095.07	
Storz	no adapter necessary
Olympus..... 8096.811	



for connection to **endoscopes**
from the following manufacturers:

	Wolf..... 809509
	Storz, Stryker, Olympus..... 807001
	ACMI, Circon, Henke-Sass-Wolf..... 807002

